



TK International  
020 7794 8700  
www.t-k.co.uk

Residential Sales  
Residential Lettings  
Property Management

Sales Office:  
9 Heath Street  
Hampstead  
London NW3 6TP  
E: sales@t-k.co.uk

Lettings Office:  
16-18 Heath Street  
Hampstead  
London NW3 6TE  
E: lettings@t-k.co.uk

tk.international  
TK International  
TK International

1998 > 2023 Celebrating 25 years of trusted service.



### **Mount Vernon Frognaal Rise Hampstead Village, NW3**

Situated on the 5th floor of what many consider to be Hampstead's premier and most exclusive portered development, is this elegant and extremely bright two bedroom, two bathroom lateral apartment, boasting magnificent views towards south and west London and benefitting from secure underground parking for two cars.

Formerly a three bedroom, three bathroom apartment, the accommodation has been reconfigured to provide luxurious and generously proportioned rooms throughout, including a 600sqft reception room with doors onto a south facing balcony.

Arguably the most impressive feature is the southerly aspect and the breathtaking views from the reception room, kitchen and bedrooms. The balcony provides a perfect outdoor space to enjoy the beautiful London skyline, whilst the master bedroom enjoys stunning views through tall sash windows.

Mount Vernon is served by a 24 hour concierge and benefits from luxury communal leisure facilities which include a gymnasium and swimming pool, in addition to year-round beautifully maintained communal gardens and visitor parking.

The development is located just moments from the popular boutiques of Hampstead High Street, in addition to the underground station (Northern Line) and the expanses of Hampstead Heath.

**£3,250,000**

**SOLE AGENT**

**Share of Freehold**

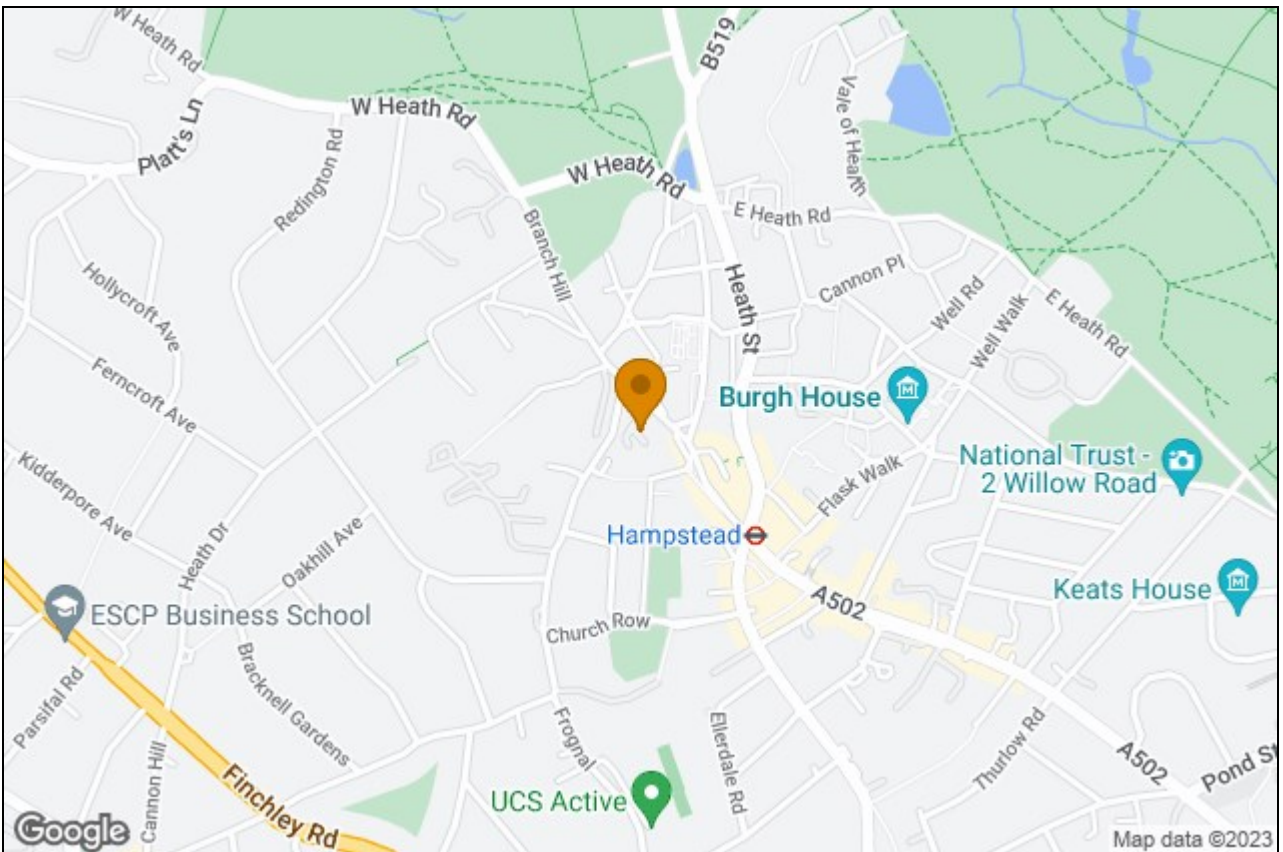








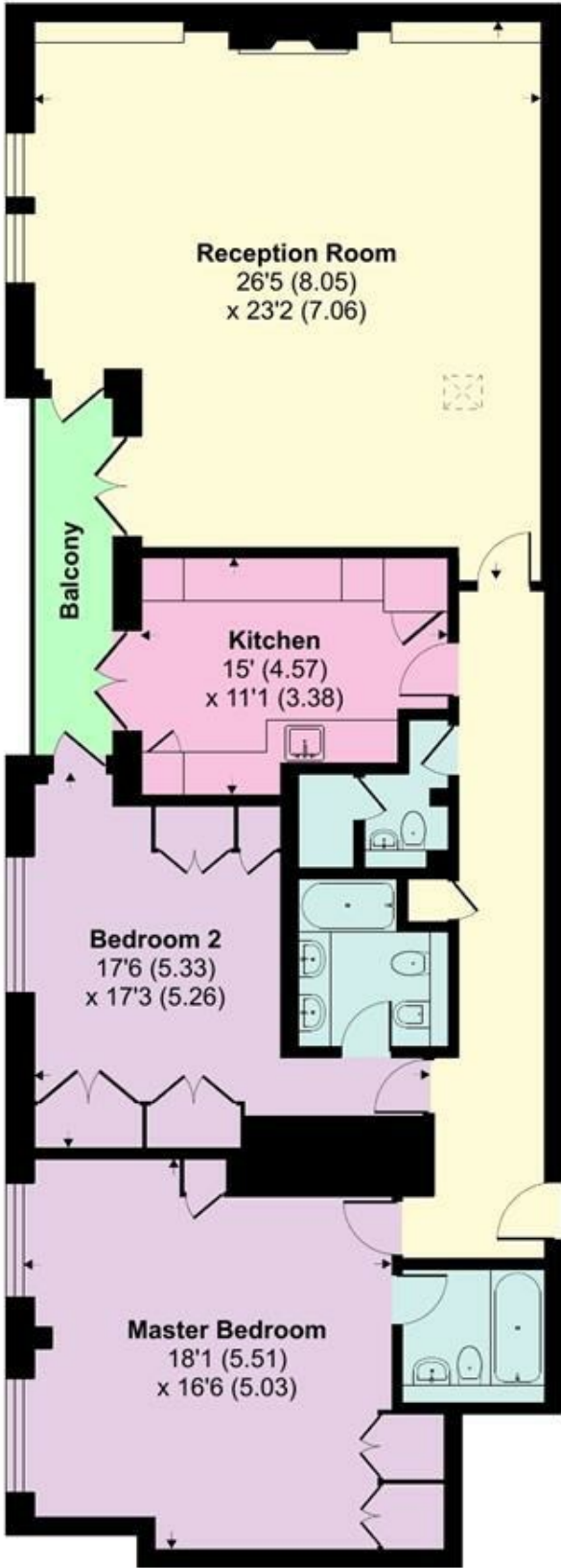




# Frognal Rise, Hampstead Village, NW3

Approximate Area = 1592 sq ft / 147.9 sq m

For identification only - Not to scale



FIFTH FLOOR



Floor plan produced in accordance with RICS Property Measurement Standards incorporating International Property Measurement Standards (IPMS2 Residential). © nichecom 2023. Produced for TK (Hampstead) Ltd. REF: 981383